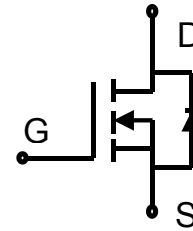




Description

WEILAI Power MOSFET is fabricated using advanced super junction technology. The resulting device has extremely low on resistance, making it especially suitable for applications which require superior power density and outstanding efficiency.



N-Channel MOSFET

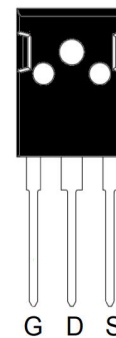
Product Summary

$V_{DS} @ T_{j,max}$	650V
$R_{DS(on),max}$	0.18Ω
I_{DM}	60A
$Q_{g,typ}$	40.2 nC

Applications

- ◆ Power factor correction (PFC).
- ◆ Switched mode power supplies (SMPS).
- ◆ Uninterruptible power supply (UPS).

TO-247



Absolute Maximum Ratings

Parameter	Symbol	Value	Unit
Drain-Source Voltage	V_{DSS}	650	V
Continuous drain current ($T_C = 25^\circ C$) ($T_C = 100^\circ C$)	I_D	25	A
		12.6	A
Pulsed drain current ¹⁾	I_{DM}	60	A
Gate-Source voltage	V_{GSS}	± 30	V
Avalanche energy, single pulse ²⁾	E_{AS}	600	mJ
Power Dissipation	P_D	208	W
Operating and Storage Temperature Range	T_J, T_{STG}	-55 to +150	$^\circ C$
Continuous diode forward current	I_S	20	A
Diode pulse current	$I_{S,pulse}$	60	A

Thermal Characteristics

Parameter	Symbol	Value	Unit
Thermal Resistance, Junction-to-Case	$R_{\theta JC}$	0.6	$^\circ C/W$
Thermal Resistance, Junction-to-Ambient ³⁾	$R_{\theta JA}$	65	$^\circ C/W$

Package Marking and Ordering Information

Device	Device Package	Marking	Units/Tube
WLP18R650	TO-247	WLP18R650	30



Electrical Characteristics T_c = 25°C unless otherwise noted

Parameter	Symbol	Test Condition	Min.	Typ.	Max.	Unit
Static characteristics						
Drain-source breakdown voltage	BV _{DSS}	V _{GS} =0 V, I _D =0.25 mA	650	-	-	V
Gate threshold voltage	V _{GS(th)}	V _{DS} =V _{GS} , I _D =0.25mA	2.5	3.5	4.5	V
Drain cut-off current	I _{DSS}	V _{DS} =650 V, V _{GS} =0 V, T _J = 25°C	-	-	1	μA
Gate leakage current, Forward	I _{GSSF}	V _{GS} =30 V, V _{DS} =0 V	-	-	100	nA
Gate leakage current, Reverse	I _{GSSR}	V _{GS} =-30 V, V _{DS} =0 V	-	-	-100	nA
Drain-source on-state resistance	R _{DS(on)}	V _{GS} =10 V, I _D =10 A T _J = 25°C T _J = 150°C	- - -	0.16 0.4	0.18 -	Ω
Gate resistance	R _G	f=1 MHz, open drain	-	5.7	-	Ω
Dynamic characteristics						
Input capacitance	C _{iss}	V _{DS} = 100 V, V _{GS} = 0 V, f = 250kHz	-	1871	-	pF
Output capacitance	C _{oss}		-	70	-	
Reverse transfer capacitance	C _{rss}		-	2.6	-	
Turn-on delay time	t _{d(on)}	V _{DD} = 400V, I _D = 10A R _G = 10Ω, V _{GS} =10V	-	32.4	-	ns
Rise time	t _r		-	51.6	-	
Turn-off delay time	t _{d(off)}		-	75	-	
Fall time	t _f		-	6.7	-	
Gate charge characteristics						
Gate to source charge	Q _{gs}	V _{DD} =520 V, I _D =10A, V _{GS} =0 to 10 V	-	9	-	nC
Gate to drain charge	Q _{gd}		-	14.5	-	
Gate charge total	Q _g		-	40.2	-	
Gate plateau voltage	V _{plateau}		-	5	-	V
Reverse diode characteristics						
Diode forward voltage	V _{SD}	V _{GS} =0 V, I _F =20A	-	-	1.1	V
Reverse recovery time	t _{rr}	V _R =400 V, I _F =10A, dI _F /dt=100 A/μs	-	292	-	ns
Reverse recovery charge	Q _{rr}		-	3.8	-	μC
Peak reverse recovery current	I _{rrm}		-	26.8	-	A

Notes:

- Limited by maximum junction temperature, maximum duty cycle is 0.75.
- I_{AS} = 5A, L=48mH, V_{DD} = 60V, Starting T_J= 25°C.
- The value of R_{thJA} is measured by placing the device in a still air box which is one cubic foot.



Electrical Characteristics Diagrams

Figure 1. Typ. Output Characteristics

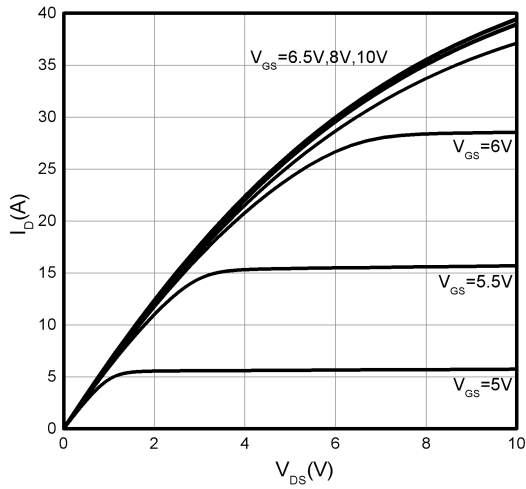


Figure 2. Transfer Characteristics

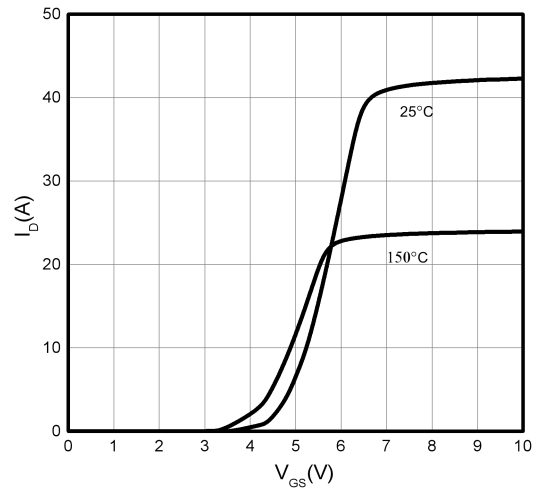


Figure 3. On-Resistance vs. Drain Current

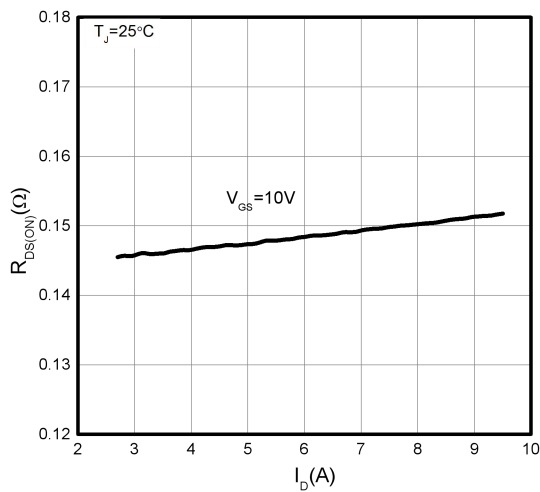


Figure 4. On-Resistance vs. Temperature

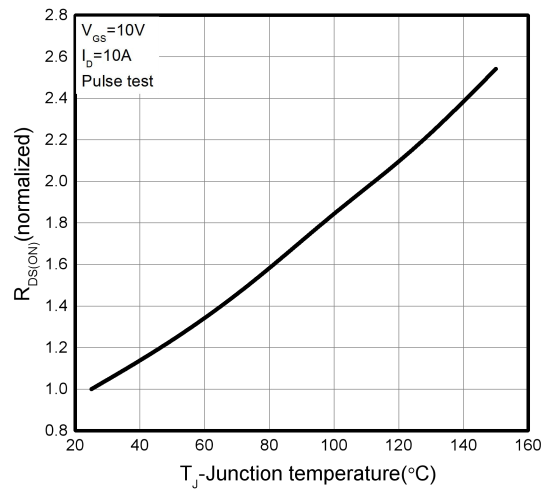


Figure 5. Breakdown Voltage vs. Temperature

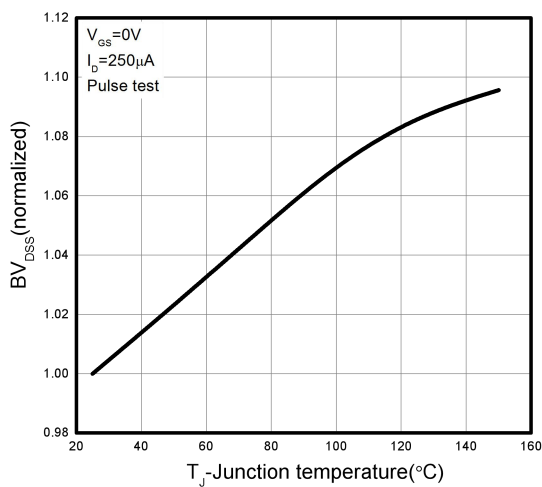


Figure 6. Threshold Voltage vs. Temperature

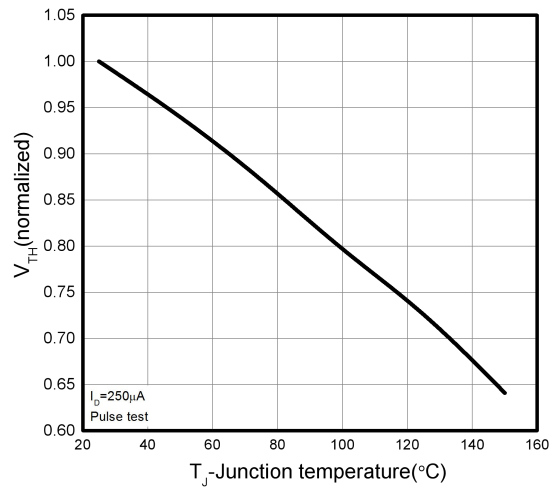




Figure 7. Body-Diode Characteristics

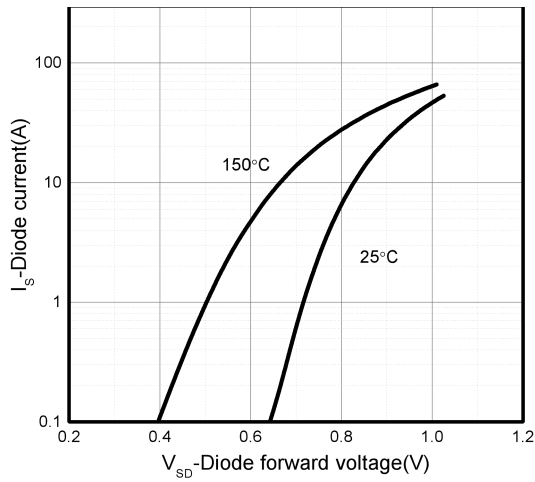


Figure 8. Capacitance Characteristics

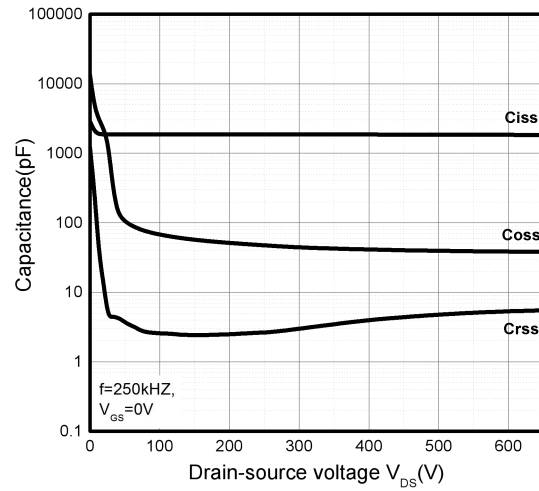


Figure 9. Gate Charge Characteristics

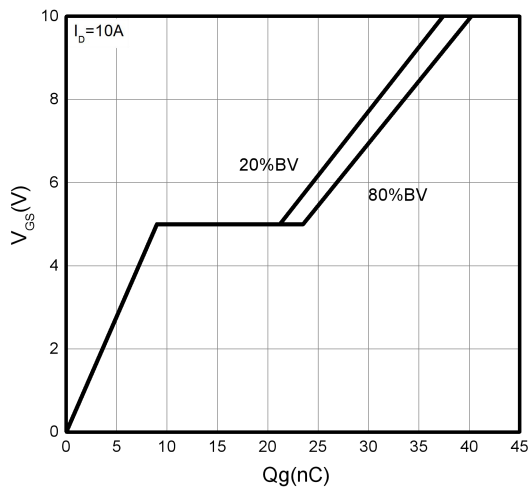


Figure 10. Drain Current Derating

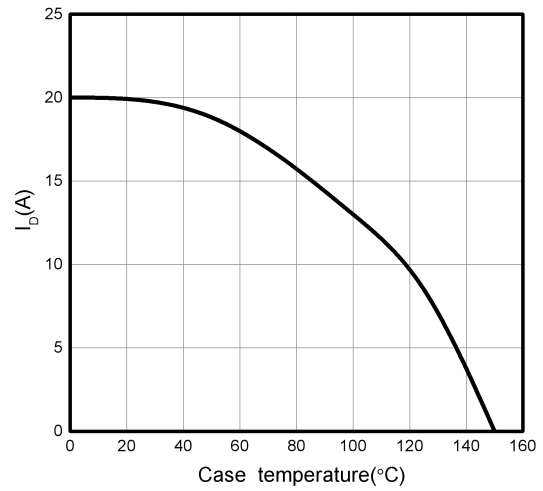


Figure 11. Power Dissipation vs. Temperature

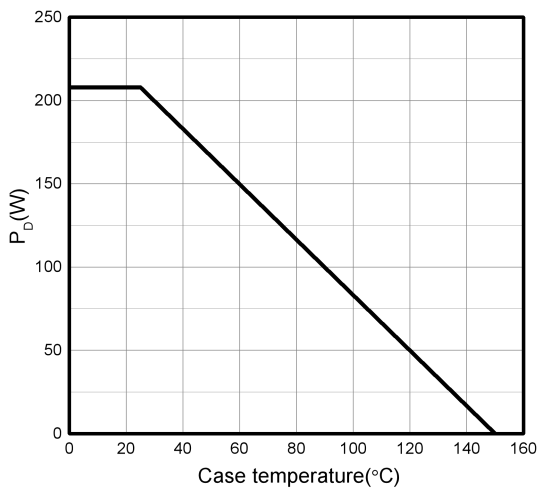


Figure 12. Safe Operating Area

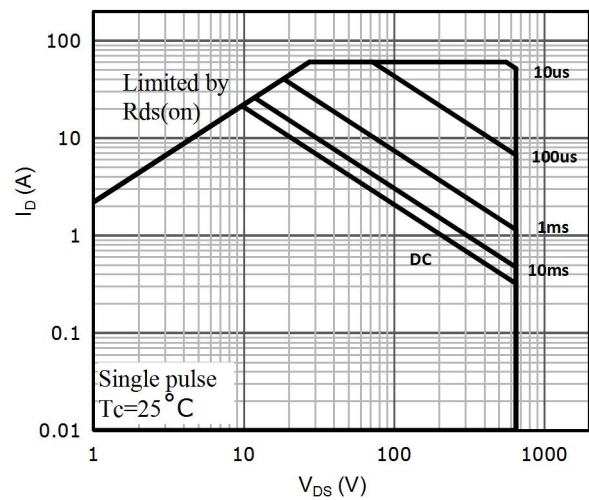
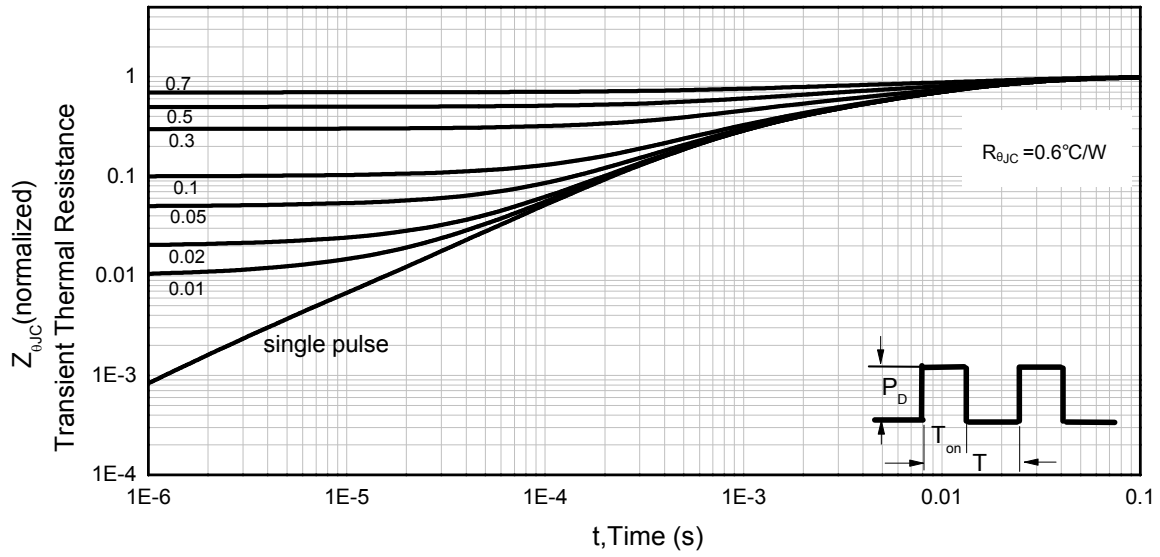




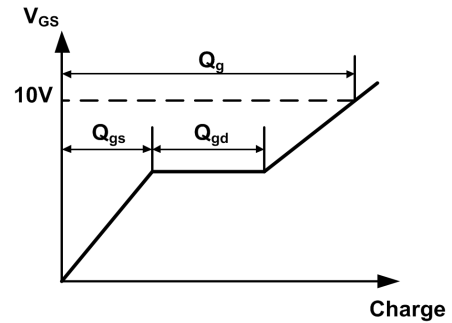
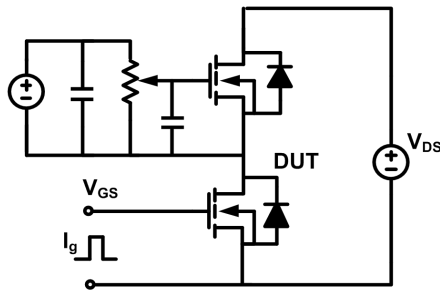
Figure 13. Normalized Maximum Transient Thermal Impedance (RthJC)



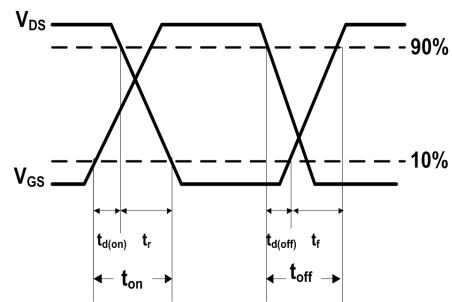
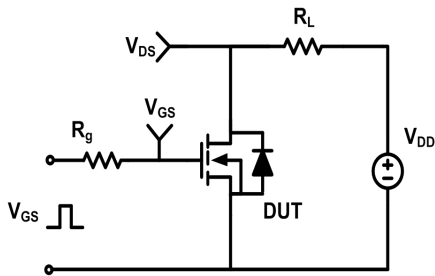


Test Circuit & Waveforms

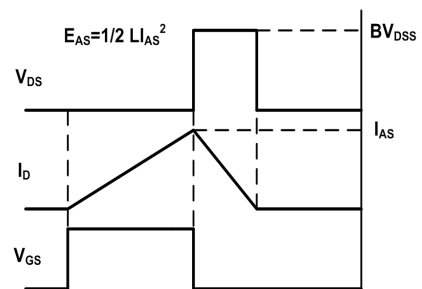
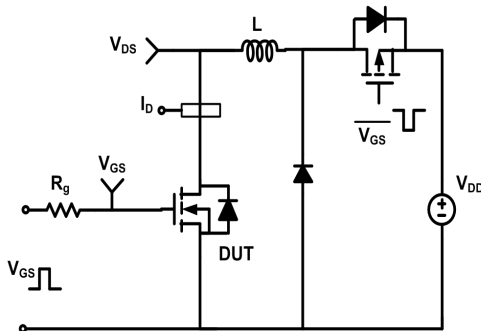
Gate Charge Test Circuit & Waveform



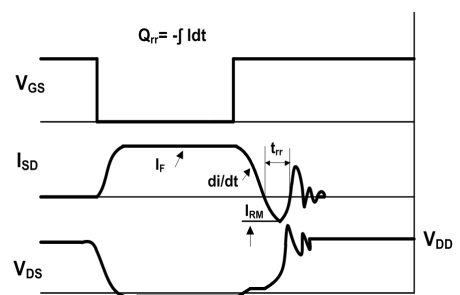
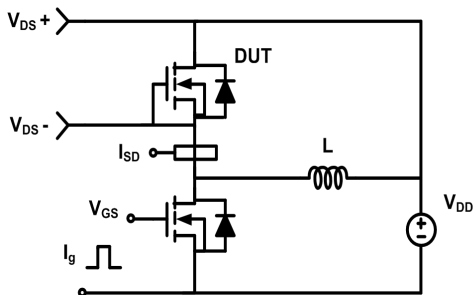
Resistive Switching Test Circuit & Waveform



Unclamped Inductive Switching (UIS) Test Circuit & Waveform

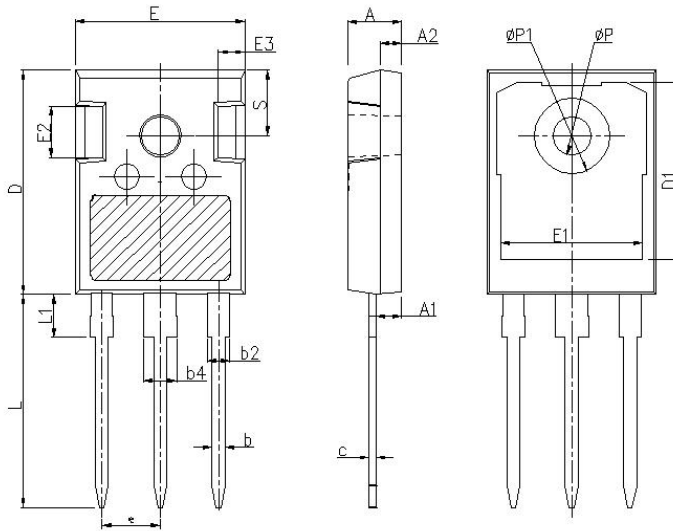


Diode Recovery Test Circuit & Waveform





Mechanical Dimensions for TO-247



DIMENSIONS IN MILLITMETERS		
SYMBOL	MIN	MAX
A	4.8	5.21
A1	2.21	2.61
A2	1.85	2.16
b	1.07	1.36
b2	1.91	2.41
b4	2.87	3.38
c	0.51	0.75
D	20.7	21.3
D1	16.25	17.65
E	15.5	16.13
E1	13	13.6
E2	3.68	5.2
E3	1	2.7
e	5.44BSC	
L	19.62	20.32
L1	-	4.4
ΦP	3.4	3.8
ΦP1	-	7.4
S	6.04	6.3



Disclaimer

Brunei has made reasonable commercial efforts to ensure that the information given in this datasheet is correct. However, it must clearly be understood that such information is for guidance only and does not constitute any representation or form part of any offer or contract.

For documents and material available from this datasheet, Brunei does not warrant or assume any legal liability or responsibility for the accuracy, completeness, or usefulness of any information, product, technology or process disclosed hereunder.

Brunei reserves the rights to at its own discretion to make any changes or improvements to this datasheet. Unless said datasheet is incorporated into the formal contract, any customer should not rely on the information as any specification or product parameters duly committed by Brunei Customers are hereby advised to verify that the information contained herein is current and complete before the entering of any contract or acknowledgement of any purchase order. Accordingly, all products specified hereunder shall be sold subject to Brunei's terms and conditions supplied at the time of order acknowledgement. Except where agreed upon by contractual agreement, testing of all parameters of each product is not necessarily performed.

Brunei does not warrant or convey any license either expressed or implied under its patent rights, nor the rights of others. Reproduction of information contained herein shall be only permissible if such reproduction is without any modification or alteration. Reproduction of this information with any alteration is an unfair and deceptive business practice. Brunei is not responsible or liable for such altered documentation.

Resale of Brunei's products with statements different from or beyond the parameters stated by Brunei for that product or service voids all express or implied warranties for the associated Brunei's product or service and is unfair and deceptive business practice. Brunei is not responsible or liable for any such statements.

Brunei's products are not authorized for use as critical components in life support devices or systems without the express written approval of Brunei. As used herein:

1. Life support devices or systems are devices or systems which, (a) are intended for surgical implant into the body, or (b) support or sustain life, and whose failure to perform, when properly used in accordance with instructions for use provided in the labeling, can be reasonably expected to result in a significant injury to the user.
2. A critical component is any component of a life support device or system whose failure to perform can be reasonably expected to cause the failure of the life support device or system, or to affect its safety or effectiveness.