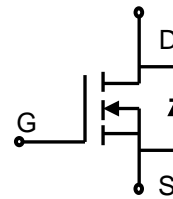




Description

These N-Channel enhancement mode power field effect transistors are using shielded gate trench DMOS technology. This advanced technology has been especially tailored to minimize on-state resistance, provide superior switching performance, and with stand high energy pulse in the avalanche and commutation mode. These devices are well suited for high efficiency fast switching applications.



N-Channel MOSFET

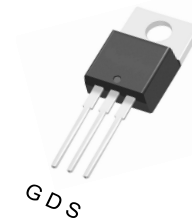
Features

- 150V, 180A, $R_{DS(on).max}=4.65m\Omega@V_{GS} = 10V$
- Improved dv/dt capability
- Fast switching
- 100% EAS Guaranteed
- Green device available

Applications

- Motor Drives
- UPS
- DC-DC Converter
- Telecom
- Battery management

Pin Configuration



TO-220

Product Summary

V_{DSS}	150V
$R_{DS(on).typ}@V_{GS}=10V$	3.7mΩ
I_D	180A

Absolute Maximum Ratings $T_C = 25^\circ C$ unless otherwise noted

Parameter	Symbol	Value	Unit
Drain-Source Voltage	V_{DSS}	150	V
Continuous drain current ¹⁾ ($T_C = 25^\circ C$, Silicon limit)	I_D	227	A
($T_C = 25^\circ C$, Package limit)		180	A
($T_C = 100^\circ C$, Silicon limit)		144	A
Pulsed drain current ²⁾	I_{DM}	720	A
Gate-Source voltage	V_{GSS}	± 20	V
Avalanche energy ³⁾	E_{AS}	1369	mJ
Power Dissipation	P_D	481	W
Storage Temperature Range	T_{STG}	-55 to +150	$^\circ C$
Operating Junction Temperature Range	T_J	-55 to +150	$^\circ C$

Thermal Characteristics

Parameter	Symbol	Value	Unit
Thermal Resistance, Junction-to-Case	$R_{\theta JC}$	0.26	$^\circ C/W$
Thermal Resistance, Junction-to-Ambient ⁴⁾	$R_{\theta JA}$	62	$^\circ C/W$
Soldering temperature, wavesoldering only allowed at leads. (1.6mm from case for 10s)	T_{sold}	260	$^\circ C$



Package Marking and Ordering Information

Device	Device Package	Marking	Units/Tube
WLP045R150	TO-220	WLP045R150	50

Electrical Characteristics

$T_J = 25^\circ\text{C}$ unless otherwise noted

Parameter	Symbol	Test Condition	Min.	Typ.	Max.	Unit
Static characteristics						
Drain-source breakdown voltage	BV_{DSS}	$V_{GS}=0V, I_D=250\mu A$	150	---	---	V
Gate threshold voltage	$V_{GS(th)}$	$V_{DS}=V_{GS}, I_D=250\mu A$	2.5	---	4.5	V
Drain-source leakage current	I_{DSS}	$V_{DS}=150V, V_{GS}=0V, T_J=25^\circ\text{C}$	---	---	1	μA
		$V_{DS}=150V, V_{GS}=0V, T_J=150^\circ\text{C}$	---	---	10	mA
Gate leakage current, Forward	I_{GSSF}	$V_{GS}=20V, V_{DS}=0V$	---	---	100	nA
Gate leakage current, Reverse	I_{GSSR}	$V_{GS}=-20V, V_{DS}=0V$	---	---	-100	nA
Drain-source on-state resistance	$R_{DS(on)}$	$V_{GS}=10V, I_D=50A, T_J=25^\circ\text{C}$	---	3.7	4.65	$m\Omega$
		$T_J=150^\circ\text{C}$	---	7.4	---	
Forward transconductance	g_{fs}	$V_{DS}=20V, I_D=50A$	---	84	---	S
Dynamic characteristics						
Input capacitance	C_{iss}	$V_{DS}=75V, V_{GS}=0V, f=250kHz$	---	9938	---	pF
Output capacitance	C_{oss}		---	759	---	
Reverse transfer capacitance	C_{rss}		---	11	---	
Turn-on delay time	$t_{d(on)}$	$V_{DD}=75V, V_{GS}=10V, I_D=50A, R_G=10\Omega$	---	107.7	---	ns
Rise time	t_r		---	140.9	---	
Turn-off delay time	$t_{d(off)}$		---	99	---	
Fall time	t_f		---	30.1	---	
Gate resistance	R_g	$V_{GS}=0V, V_{DS}=0V, f=1MHz$	---	1.07	---	Ω
Gate charge characteristics						
Gate to source charge	Q_{gs}	$V_{DD}=75V, I_D=50A, V_{GS}=10V$	---	50.3	---	nC
Gate to drain charge	Q_{gd}		---	15.8	---	
Gate charge total	Q_g		---	120.2	---	
Gate plateau voltage	$V_{plateau}$		---	5.4	---	V
Output Charge	Q_{oss}	$V_{DS}=50V, V_{GS}=0V$	---	224	---	nC
Drain-Source diode characteristics and Maximum Ratings						
Continuous Source Current	I_S		---	---	180	A
Pulsed Source Current	I_{SM}		---	---	720	A
Diode Forward Voltage	V_{SD}	$V_{GS}=0V, I_S=50A, T_J=25^\circ\text{C}$	---	---	1.1	V
Reverse Recovery Time	t_{rr}	$I_S=50A, di/dt=200A/\mu s, T_J=25^\circ\text{C}$	---	94.4	---	ns
Reverse Recovery Charge	Q_{rr}		---	620.8	---	nC

Notes:

- Limited by maximum junction temperature and duty cycle.
- Repetitive Rating: Pulse width limited by maximum junction temperature.
- $V_{DD}=50V, V_{GS}=10V, L=0.5mH, I_{AS}=74A, \text{Starting } T_J=25^\circ\text{C}$.
- The value of R_{thJA} is measured by placing the device in a still air box which is one cubic foot.



Electrical Characteristics Diagrams

Figure 1. Typ. Output Characteristics

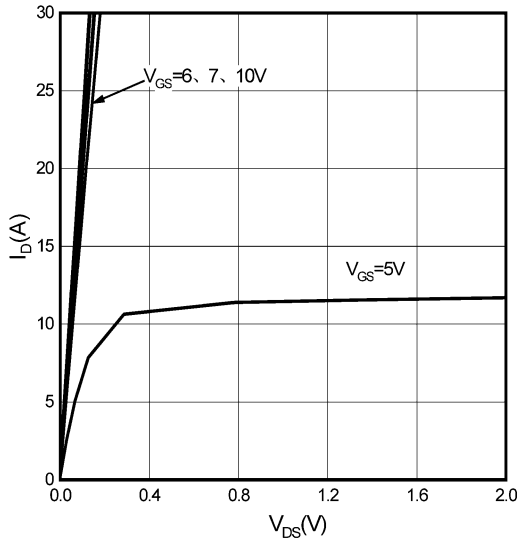


Figure 2. Transfer Characteristics

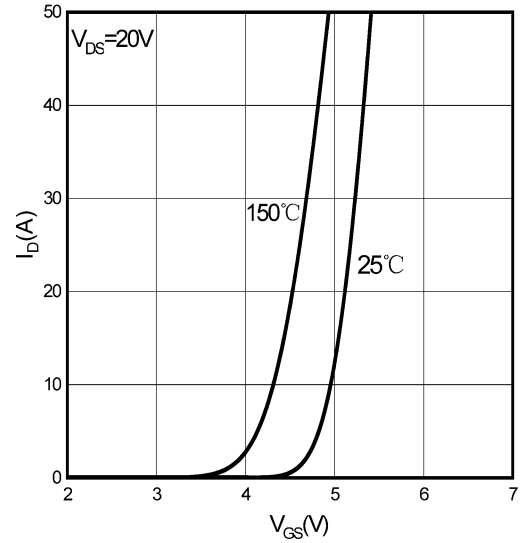


Figure 3. On-Resistance vs. Drain Current

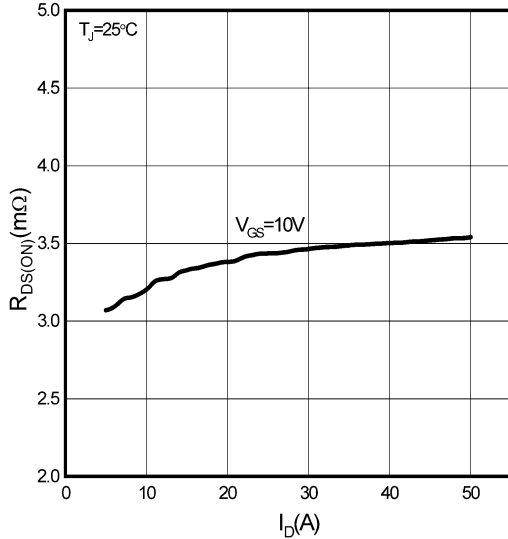


Figure 4. On-Resistance vs. Temperature

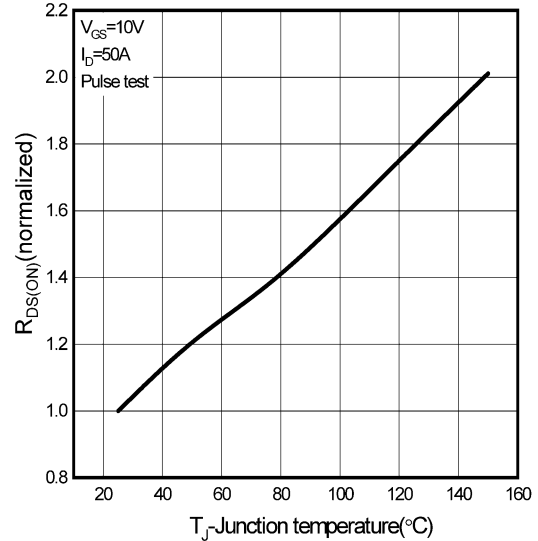


Figure 5. Breakdown Voltage vs. Temperature

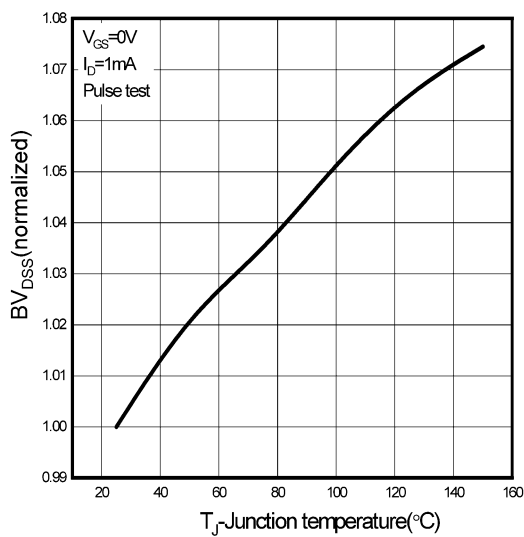


Figure 6. Threshold Voltage vs. Temperature

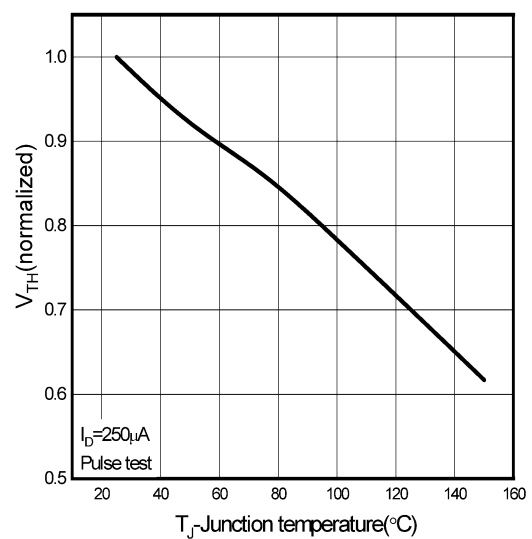




Figure 7. $R_{DS(on)}$ vs. Gate Voltage

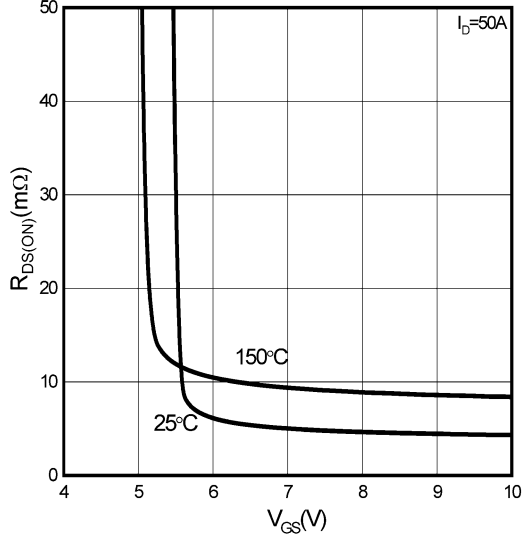


Figure 8. Body-Diode Characteristics

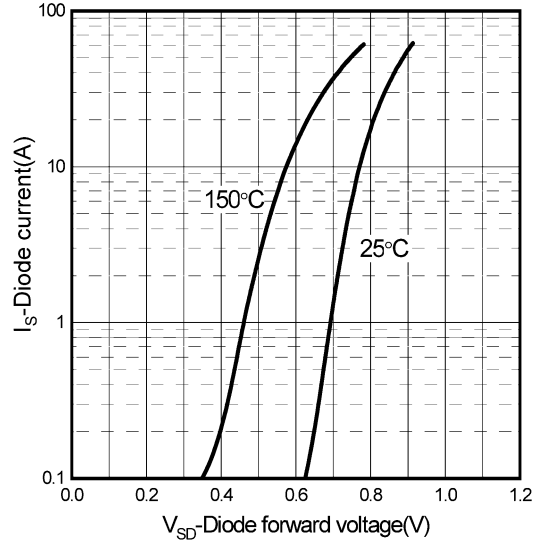


Figure 9. Capacitance Characteristics

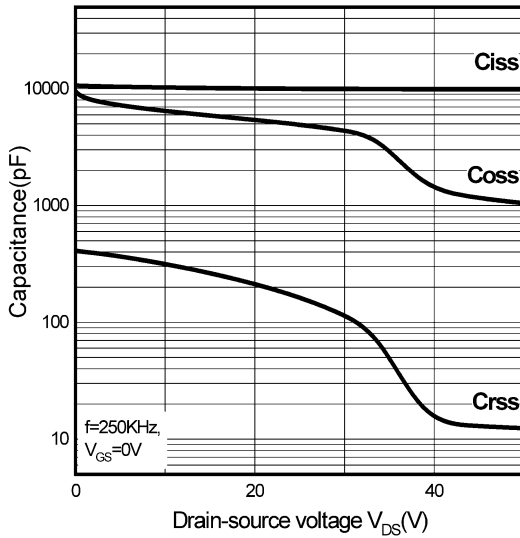


Figure 10. Gate Charge Characteristics

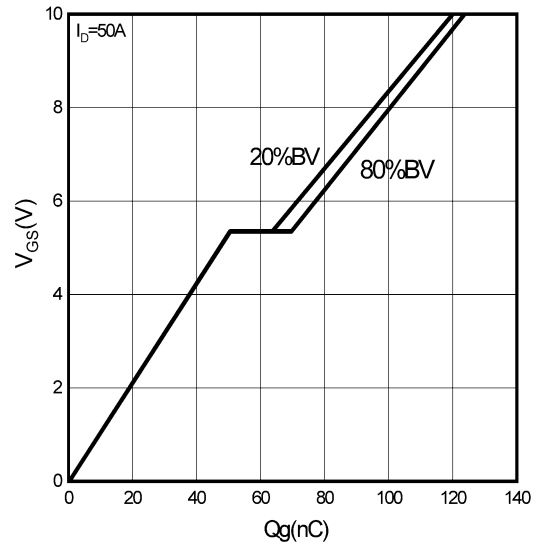


Figure 11. Drain Current Derating

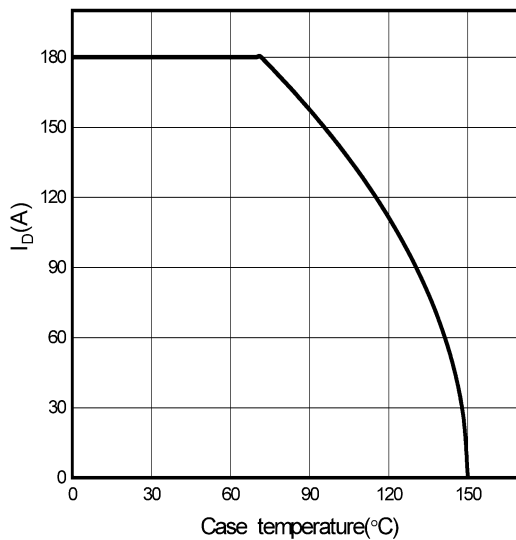


Figure 12. Power Dissipation vs. Temperature

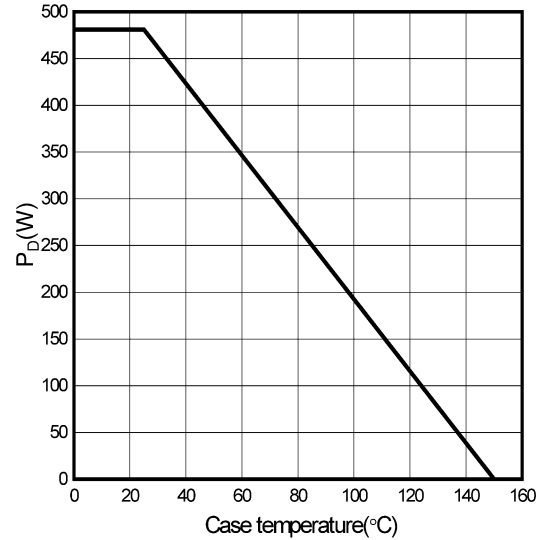




Figure 13. Safe Operating Area

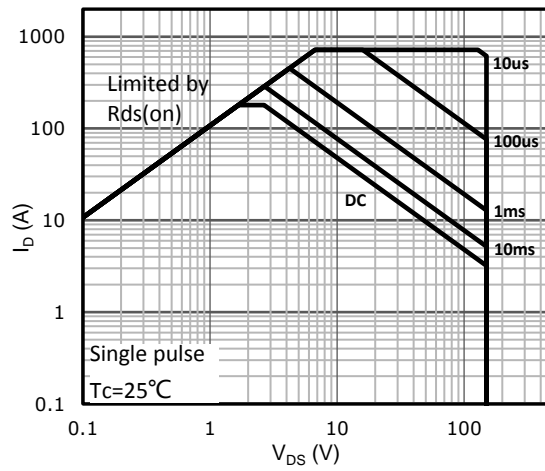
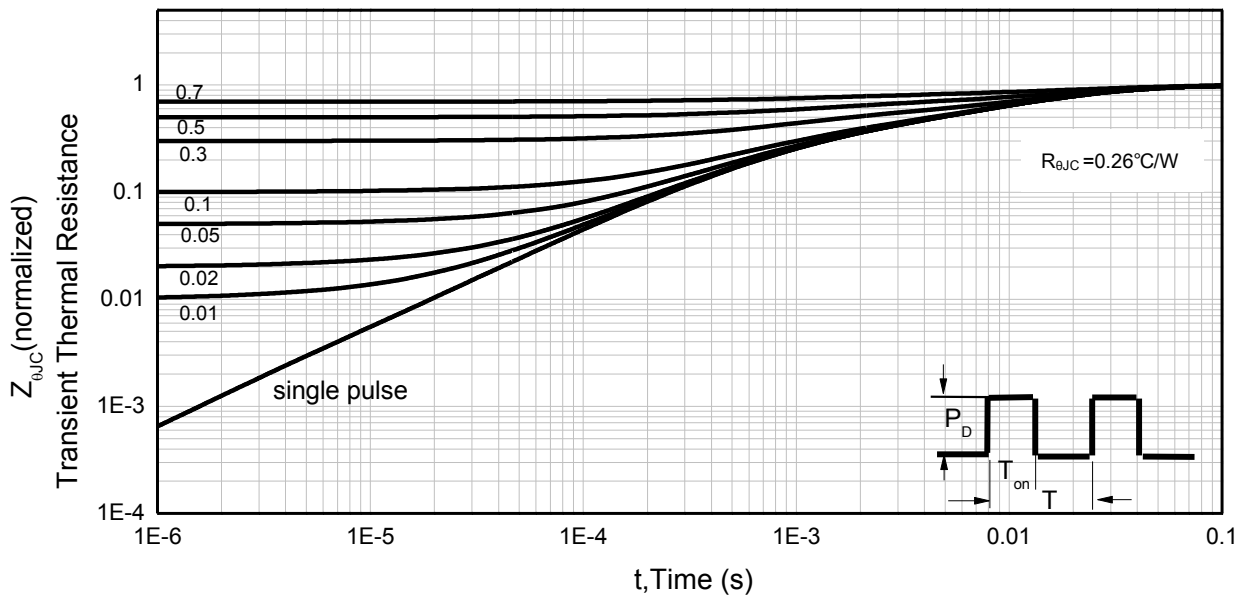


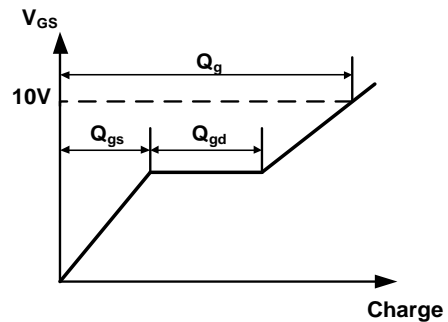
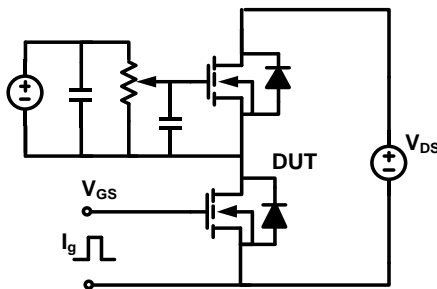
Figure 14. Normalized Maximum Transient Thermal Impedance (R_{thJC})



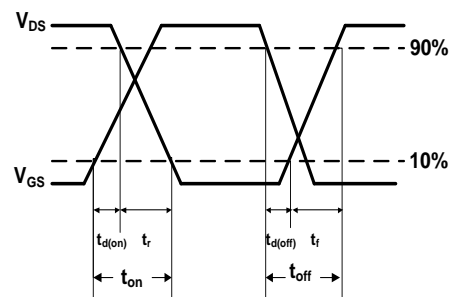
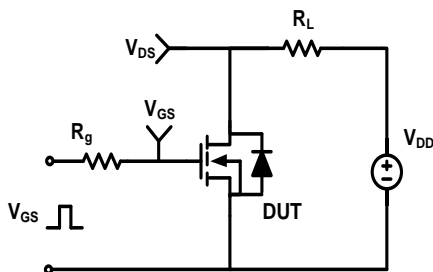


Test Circuit & Waveforms

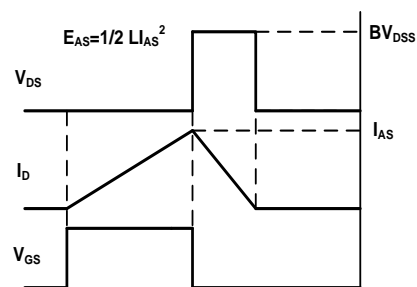
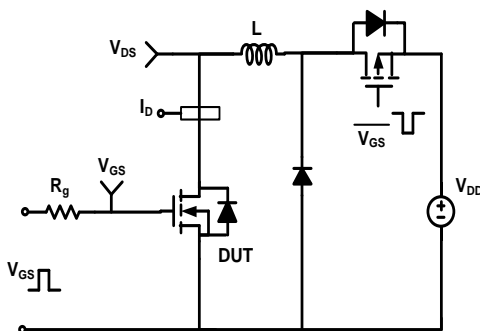
Gate Charge Test Circuit & Waveform



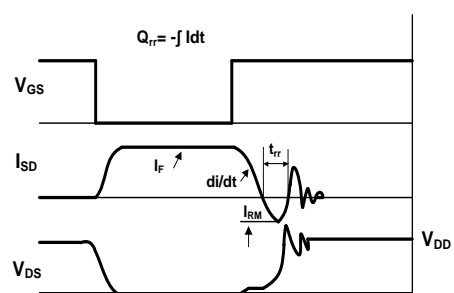
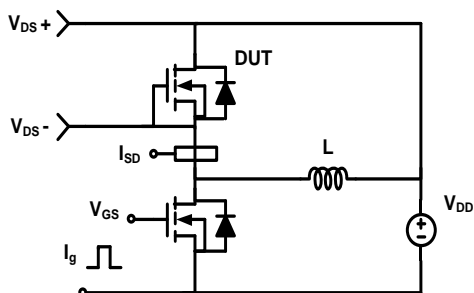
Resistive Switching Test Circuit & Waveform



Unclamped Inductive Switching (UIS) Test Circuit & Waveform

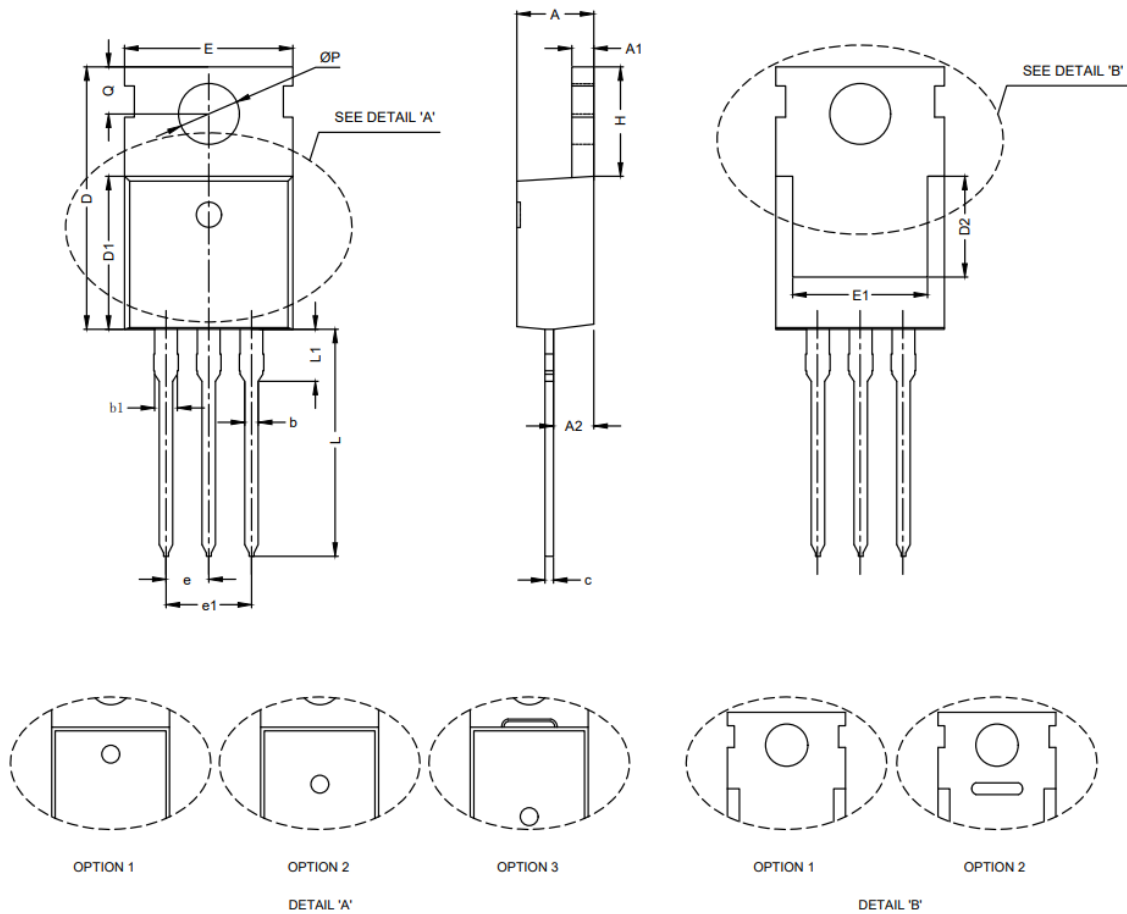


Diode Recovery Test Circuit & Waveform





Mechanical Dimensions for TO-220



SYMBOLS	MILLIMETERS		INCHES	
	MIN	MAX	MIN	MAX
A	4.25	4.70	0.167	0.185
A1	1.20	1.40	0.047	0.055
A2	2.20	2.92	0.087	0.115
b	0.70	0.97	0.028	0.038
b1	1.14	1.78	0.045	0.070
c	0.40	0.61	0.016	0.024
D	14.32	16.15	0.564	0.636
D1	8.39	9.40	0.330	0.370
D2	5.50	-	0.217	-
E	9.70	10.36	0.382	0.408
E1	7.00	-	0.276	-
e	2.54 BSC		0.100 BSC	
e1	5.08 BSC		0.200 BSC	
H	6.25	6.95	0.246	0.274
L	12.75	14.40	0.502	0.567
L1	-	4.05	-	0.159
∅P	3.40	3.80	0.134	0.150
Q	2.54	3.35	0.100	0.132



Disclaimer

Brunei has made reasonable commercial efforts to ensure that the information given in this datasheet is correct. However, it must clearly be understood that such information is for guidance only and does not constitute any representation or form part of any offer or contract.

For documents and material available from this datasheet, Brunei does not warrant or assume any legal liability or responsibility for the accuracy, completeness, or usefulness of any information, product, technology or process disclosed hereunder.

Brunei reserves the rights to at its own discretion to make any changes or improvements to this datasheet. Unless said datasheet is incorporated into the formal contract, any customer should not rely on the information as any specification or product parameters duly committed by Brunei Customers are hereby advised to verify that the information contained herein is current and complete before the entering of any contract or acknowledgement of any purchase order. Accordingly, all products specified hereunder shall be sold subject to Brunei's terms and conditions supplied at the time of order acknowledgement. Except where agreed upon by contractual agreement, testing of all parameters of each product is not necessarily performed.

Brunei does not warrant or convey any license either expressed or implied under its patent rights, nor the rights of others. Reproduction of information contained herein shall be only permissible if such reproduction is without any modification or alteration. Reproduction of this information with any alteration is an unfair and deceptive business practice. Brunei is not responsible or liable for such altered documentation.

Resale of Brunei's products with statements different from or beyond the parameters stated by Brunei for that product or service voids all express or implied warranties for the associated Brunei's product or service and is unfair and deceptive business practice. Brunei is not responsible or liable for any such statements.

Brunei's products are not authorized for use as critical components in life support devices or systems without the express written approval of Brunei. As used herein:

1. Life support devices or systems are devices or systems which, (a) are intended for surgical implant into the body, or (b) support or sustain life, and whose failure to perform, when properly used in accordance with instructions for use provided in the labeling, can be reasonably expected to result in a significant injury to the user.
2. A critical component is any component of a life support device or system whose failure to perform can be reasonably expected to cause the failure of the life support device or system, or to affect its safety or effectiveness.